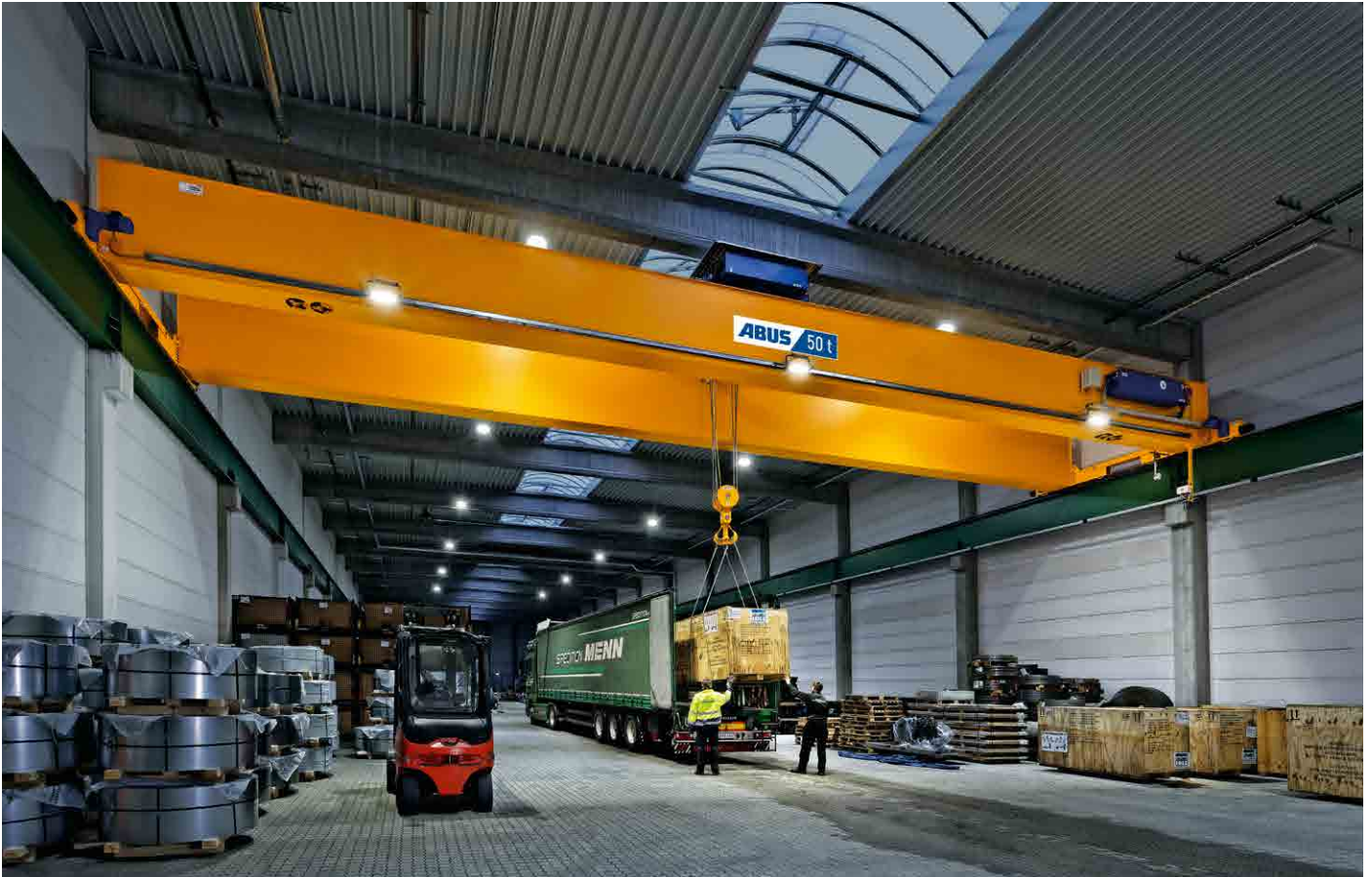




LED lighting

ABUS
CRANE SYSTEMS



Characteristics of LEDs

- Immediate brightness
- Operating temperature: -30°C to +50°C
- Input voltage AC 100 - 240 V, 50 / 60 Hz
- Protection class IP 55
- Colour temperature 5000 K
- Over 50,000 hours of service life
- Over 100,000 switching cycles
- Energy efficiency class A+

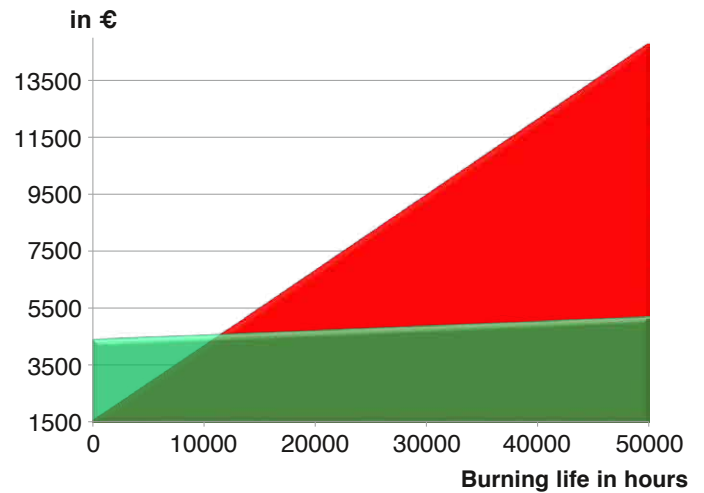


Cost comparison with an electricity price of approx.

16 cents / kWh

■ 4 units, halogen 750 W

■ 4 units, LED 100 W



Brightness 200 lx on average			Height from FFL to underside of crane track				
			5 m	10 m	15 m	20 m	25 m
Span	10 m	Number	2	3	3	4	4
		Type	Flat 100 W 90° x 90°	Flat 100 W 60° x 60°	Flat 100 W 30° x 30°	Flat 100 W 15° x 15°	Flat 150 W 15° x 15°
	15 m	Number	3	4	4	5	5
		Type	Flat 100 W 90° x 90°	Flat 100 W 60° x 60°	Flat 100 W 30° x 30°	Flat 100 W 15° x 15°	Flat 150 W 15° x 15°
	20 m	Number	4	5	5	7	6
		Type	Flat 100 W 90° x 90°	Flat 100 W 60° x 60°	Flat 100 W 30° x 30°	Flat 100 W 15° x 15°	Flat 150 W 15° x 15°
	25 m	Number	5	6	6	8	7
		Type	Flat 100 W 90° x 90°	Flat 100 W 60° x 60°	Flat 100 W 30° x 30°	Flat 100 W 15° x 15°	Flat 150 W 15° x 15°
	30 m	Number	6	7	7	9	8
		Type	Flat 100 W 90° x 90°	Flat 100 W 60° x 60°	Flat 100 W 30° x 30°	Flat 100 W 15° x 15°	Flat 150 W 15° x 15°
	35 m	Number	7	8	9	11	9
		Type	Flat 100 W 90° x 90°	Flat 100 W 60° x 60°	Flat 100 W 30° x 30°	Flat 100 W 15° x 15°	Flat 150 W 15° x 15°
	40 m	Number	8	9	10	12	10
		Type	Flat 100 W 90° x 90°	Flat 100 W 60° x 60°	Flat 100 W 30° x 30°	Flat 100 W 15° x 15°	Flat 150 W 15° x 15°

Scope of supply:

LED lighting includes switching element in the crane control device and the required number of transformers.

Measurement range:

Crane track area plus 1.5 m width; minus 1.0 m length; height above ground 0.25 m

Note regarding orientation:

Excerpt from workplace guideline ASR - A3.4:

Production & similar activity 150 lx, packing areas 300 lx, laboratories 500 lx

Note:

We assume that the crane lighting serves only in compensating for the shadows cast by the crane (the crane is lit by indoor lighting of the building) and therefore recommend lighting with 200 lx on average. Should a higher lighting intensity be required according to guidelines such as the ASR, lighting with 300 lx or 500 lx on average is specified on the following page. If the crane lighting is used in areas without external lighting or if you require a higher lighting intensity, please contact us.

Brightness 300 lx on average			Height from FFL to underside of crane track				
			5 m	10 m	15 m	20 m	25 m
Span	10 m	Number	3	3	2	3	4
		Type	Flat 100 W 90° x 90°	Flat 150 W 60° x 60°	Flat 200 W 15° x 15°	Flat 200 W 15° x 15°	Flat 200 W 15° x 15°
	15 m	Number	4	4	3	4	5
		Type	Flat 100 W 90° x 90°	Flat 150 W 60° x 60°	Flat 200 W 15° x 15°	Flat 200 W 15° x 15°	Flat 200 W 15° x 15°
	20 m	Number	5	5	4	5	7
		Type	Flat 100 W 90° x 90°	Flat 150 W 60° x 60°	Flat 200 W 15° x 15°	Flat 200 W 15° x 15°	Flat 200 W 15° x 15°
	25 m	Number	6	6	5	6	8
		Type	Flat 100 W 90° x 90°	Flat 150 W 60° x 60°	Flat 200 W 15° x 15°	Flat 200 W 15° x 15°	Flat 200 W 15° x 15°
	30 m	Number	8	7	6	7	9
		Type	Flat 100 W 90° x 90°	Flat 150 W 60° x 60°	Flat 200 W 15° x 15°	Flat 200 W 15° x 15°	Flat 200 W 15° x 15°
	35 m	Number	9	8	6	8	10
		Type	Flat 100 W 90° x 90°	Flat 150 W 60° x 60°	Flat 200 W 15° x 15°	Flat 200 W 15° x 15°	Flat 200 W 15° x 15°
	40 m	Number	10	9	7	9	11
		Type	Flat 100 W 90° x 90°	Flat 150 W 60° x 60°	Flat 200 W 15° x 15°	Flat 200 W 15° x 15°	Flat 200 W 15° x 15°

Brightness 500 lx on average			Height from FFL to underside of crane track				
			5 m	10 m	15 m	20 m	25 m
Span	10 m	Number	3	3	2	3	4
		Type	Flat 150 W 90° x 90°	Flat 250 W 60° x 60°	Flat 350 W 15° x 15°	Flat 350 W 15° x 15°	Flat 350 W 15° x 15°
	15 m	Number	4	4	3	4	5
		Type	Flat 150 W 90° x 90°	Flat 250 W 60° x 60°	Flat 350 W 15° x 15°	Flat 350 W 15° x 15°	Flat 350 W 15° x 15°
	20 m	Number	5	5	4	5	6
		Type	Flat 150 W 90° x 90°	Flat 250 W 60° x 60°	Flat 350 W 15° x 15°	Flat 350 W 15° x 15°	Flat 350 W 15° x 15°
	25 m	Number	7	6	4	6	7
		Type	Flat 150 W 90° x 90°	Flat 250 W 60° x 60°	Flat 350 W 15° x 15°	Flat 350 W 15° x 15°	Flat 350 W 15° x 15°
	30 m	Number	8	7	5	7	8
		Type	Flat 150 W 90° x 90°	Flat 250 W 60° x 60°	Flat 350 W 15° x 15°	Flat 350 W 15° x 15°	Flat 350 W 15° x 15°
	35 m	Number	9	9	6	8	10
		Type	Flat 150 W 90° x 90°	Flat 250 W 60° x 60°	Flat 350 W 15° x 15°	Flat 350 W 15° x 15°	Flat 350 W 15° x 15°
	40 m	Number	11	10	7	9	11
		Type	Flat 150 W 90° x 90°	Flat 250 W 60° x 60°	Flat 350 W 15° x 15°	Flat 350 W 15° x 15°	Flat 350 W 15° x 15°

Information for the required LED lighting

Contact name: _____

Company name: _____

Address: _____

Postcode: _____

Telephone: _____

E-mail: _____

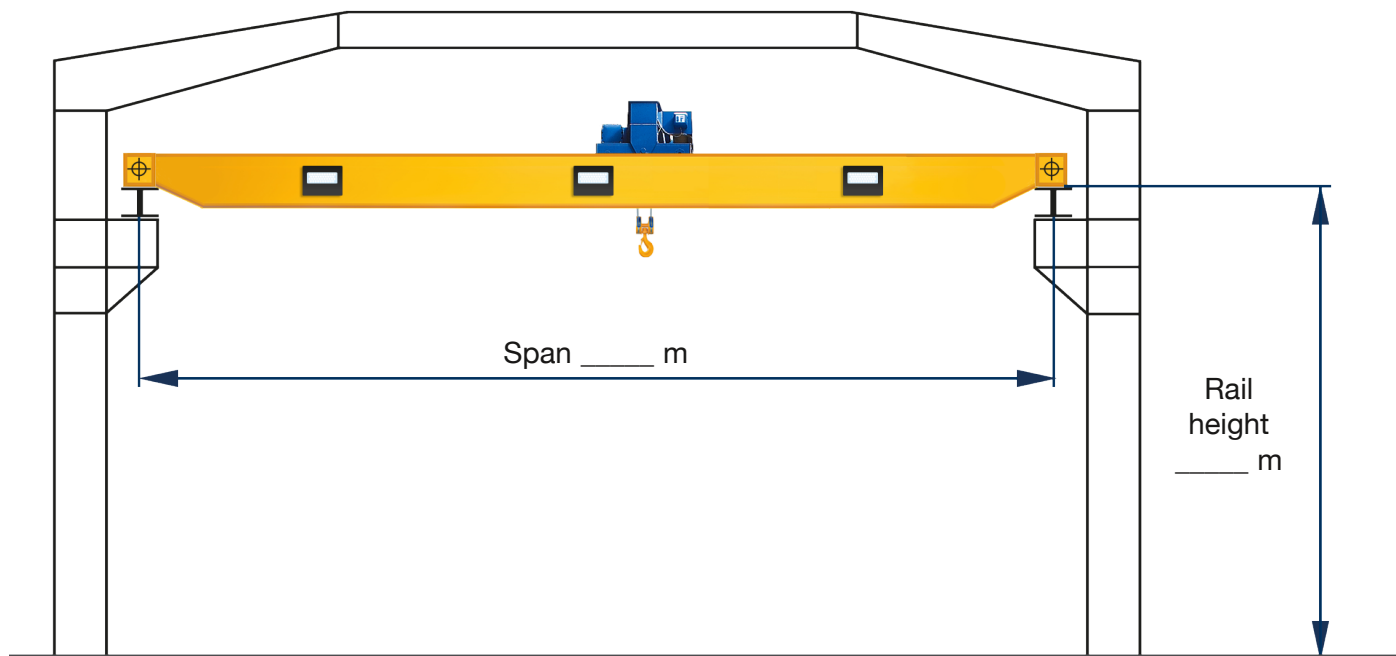
Crane number: _____

Required average lighting intensity

200 lx

300 lx

500 lx

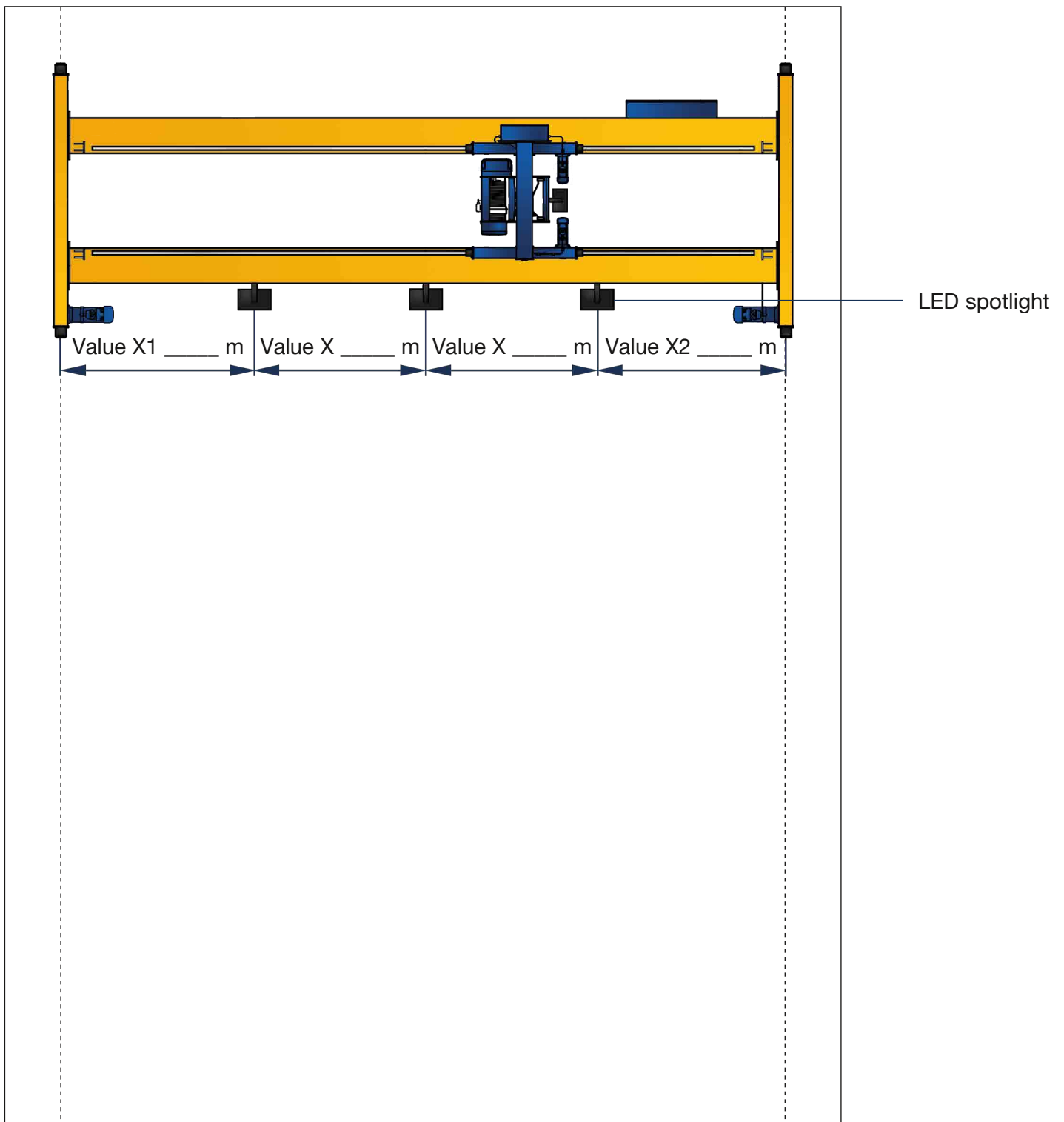


Layout plan of your crane installation

Lighting:

along the main girder

on the hoist unit



If no positions for the lights are specified, the lights will be positioned equally across the span of the crane.

For areas requiring specific illumination, please note these on the layout plan and offer approximate dimensions.

01.18

AN 316198